

# ACCESSIBILITY INSTRUMENTS FOR PLANNING PRACTICE

COST Action TU1002 . Cecília Silva



# What is a COST Action

*Gestão da Mobilidade Urbana*



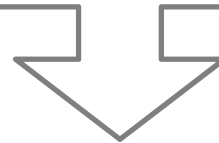
- **Networking Activity on a specific issue**
  - **TU1002: Accessibility Instruments for Planning Practice in Europe**
- **This Action is under the scientific field of Transport and Urban Development (TUD)**
- **4 year time frame**
- **Financing meetings**
- **Research must be financed by other means**

# Motivation

*Gestão da Mobilidade Urbana*



- **Importance of accessibility measures for planning practice**
  - The integrated approach of the concept for planning
- **Implementation gap**
  - New approach: bringing together modellers and planners



- **Bring together modeller and planners at an European-wide study**

# Our Focus

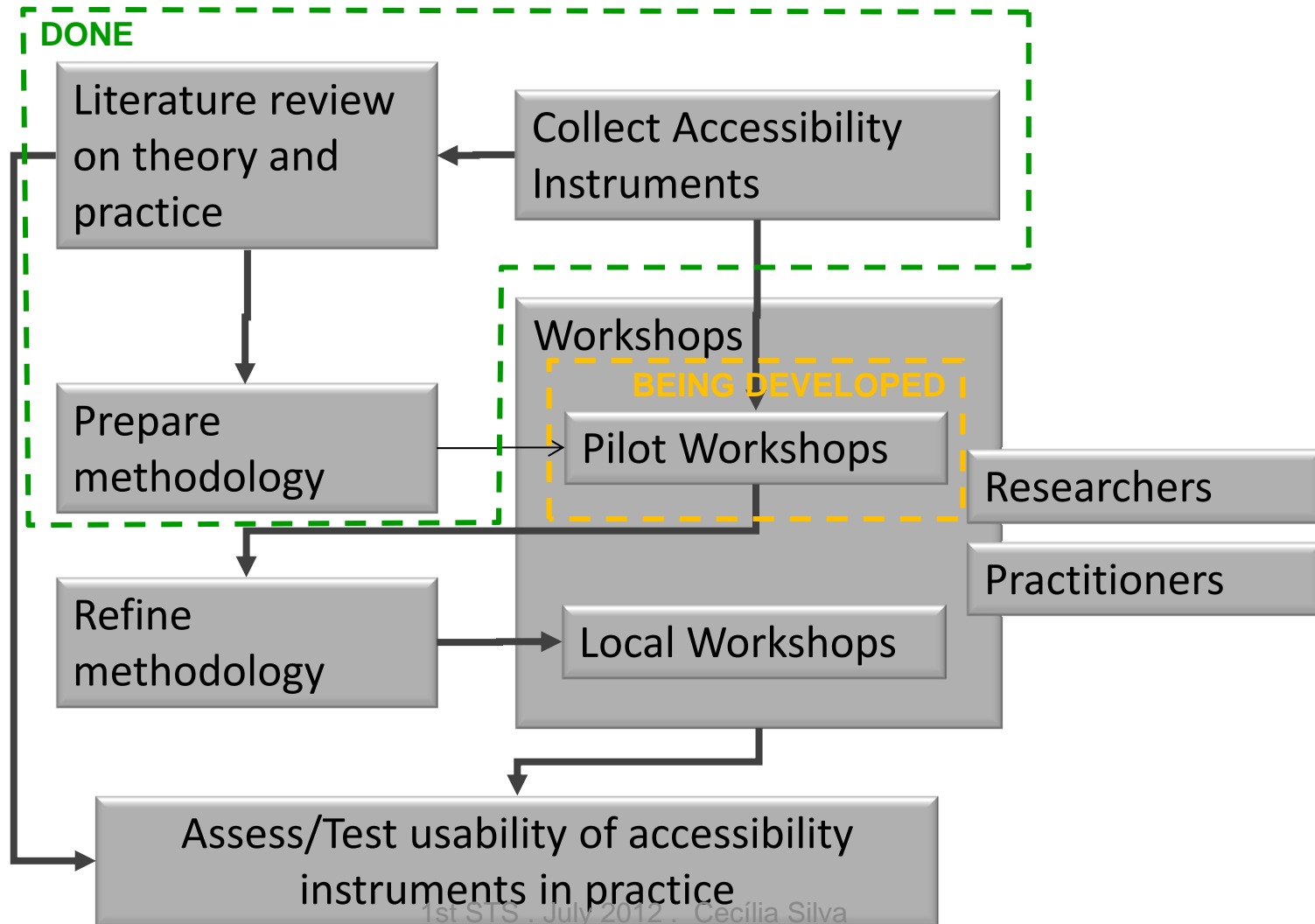
*Gestão da Mobilidade Urbana*



- **The Goal**
  - To improve the *usability* of accessibility instruments to support urban planning practices
    - gain insight into the usability of accessibility concepts in planning practice
    - act as a catalyst for the effective implementation of accessibility instruments in European planning practice
    - present recommendations to improve the design and implementation of accessibility instruments in planning practice
- **Core question:**
  - **How to understand the low implementation of existing accessibility instruments and what are strategies to improve this?**
- **Approach:**
  - **Bring together European scientists working on accessibility measures**
  - **Bring together scientists and planning practitioners**
  - **Follow the experiential learning cycle**

# Scientific Approach

Gestão da Mobilidade Urbana



# Scientific work plan

*Gestão da Mobilidade Urbana*



Phase 0: Introductory Phase

Phase 1: State of the Art of Accessibility Instruments

Phase 2: A view from planning practice and pilots

Phase 3: Local implementation and reflection workshops

Phase 4: Concluding Phase

Year 1												Year 2												Year 3												Year 4											
1	2	3	4	5	6	7	8	9	10	11	12	13	14	15	16	17	18	19	20	21	22	23	24	25	26	27	28	29	30	31	32	33	34	35	36	37	38	39	40	41	42	43	44	45	46	47	48
Phase 0						Phase 1						Phase 2						Phase 3						Phase 4																							
1	2	3	4	5	6	1	2	3	4	5	6	7	8	9	10	11	12	1	2	3	4	5	6	7	8	9	10	11	12	1	2	3	4	5	6	7	8	9	10	11	12	1	2	3	4	5	6

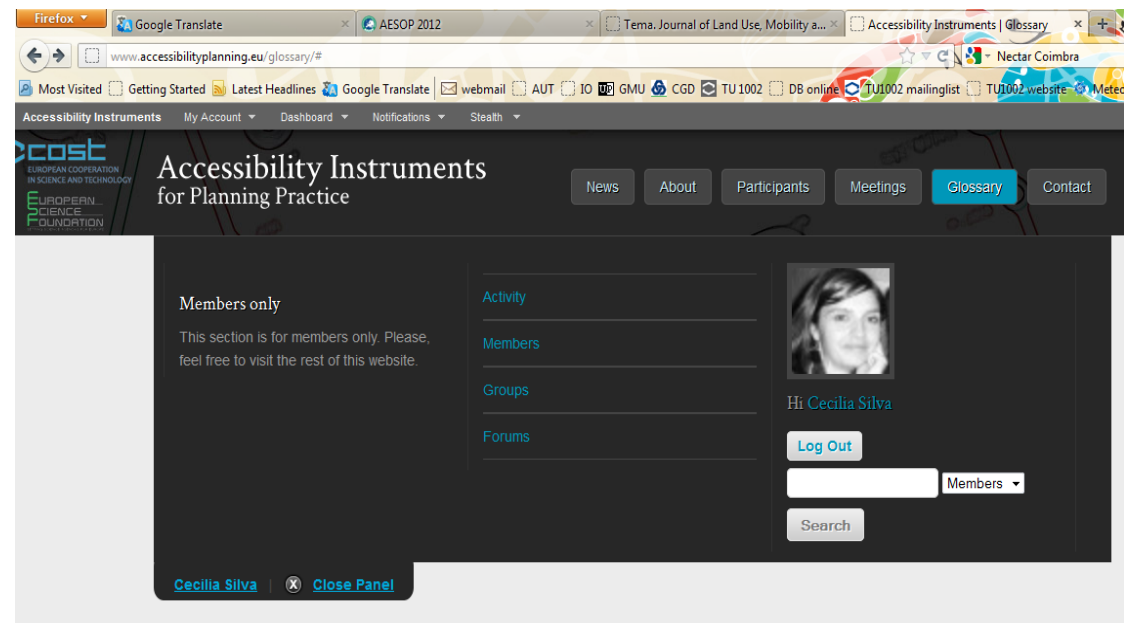


# Outputs

## Gestão da Mobilidade Urbana



- Website (<http://www.accessibilityplanning.eu>)
  - Information on participants
  - Information on meetings
    - Dates
    - Agenda
    - Presentations
    - Minutes
  - Glossary
  - Member area



# Outputs

*Gestão da Mobilidade Urbana*



- **Reports:**
  - **Report 1: Accessibility Instruments for Planning Practice**
  - **Report 2: Workshop Evaluation of Accessibility Instruments**
  - **Final Report: Assessment of Usefulness of Accessibility Instruments for Planning Practice**
  
- **Report 1**
  - **is just being closed – will be available on the website by July**
  - **Review of literature on accessibility instruments and their use in planning practice**
  - **Collection of Accessibility Instruments produced in Europe and Australia**





- **Report 1 (Hull and Silva, 2012)**
  - is just being closed – will be available on the website by July
  - Literature review on accessibility instruments and measure
  - Literature review on Accessibility instruments in planning practice
  - **Collection of Accessibility Instruments produced across Europe**
    - 24 Accessibility Instruments reviewed
    - 22 Instruments present short reports in Chapter 3
    - 23 Instruments were compared through a Survey in Chapter 4
      - Context
      - Planning Goals
      - Characteristics of the Instrument
      - End users and how they use the tool (developers perception)
    - Summary Sheets of Accessibility Instruments in the Action

# Outputs

## *Gestão da Mobilidade Urbana*



- **We are building a web-based repository with easy browsing and searching of accessibility instruments that may in the future help to make the bridge between developers and practitioners**
  - Online dissemination tool
  - Categorizing tools and facilitating search

# Action Parties

*Gestão da Mobilidade Urbana*



22 Parties

Belgium

Poland

Cyprus

Portugal

Czech Rep.

Slovenia

Denmark

Spain

Finland

Sweden

France

Switzerland

Germany

United Kingdom

Greece

Australia (non-cost country)

Israel

Italy

Austria (new)

Netherlands

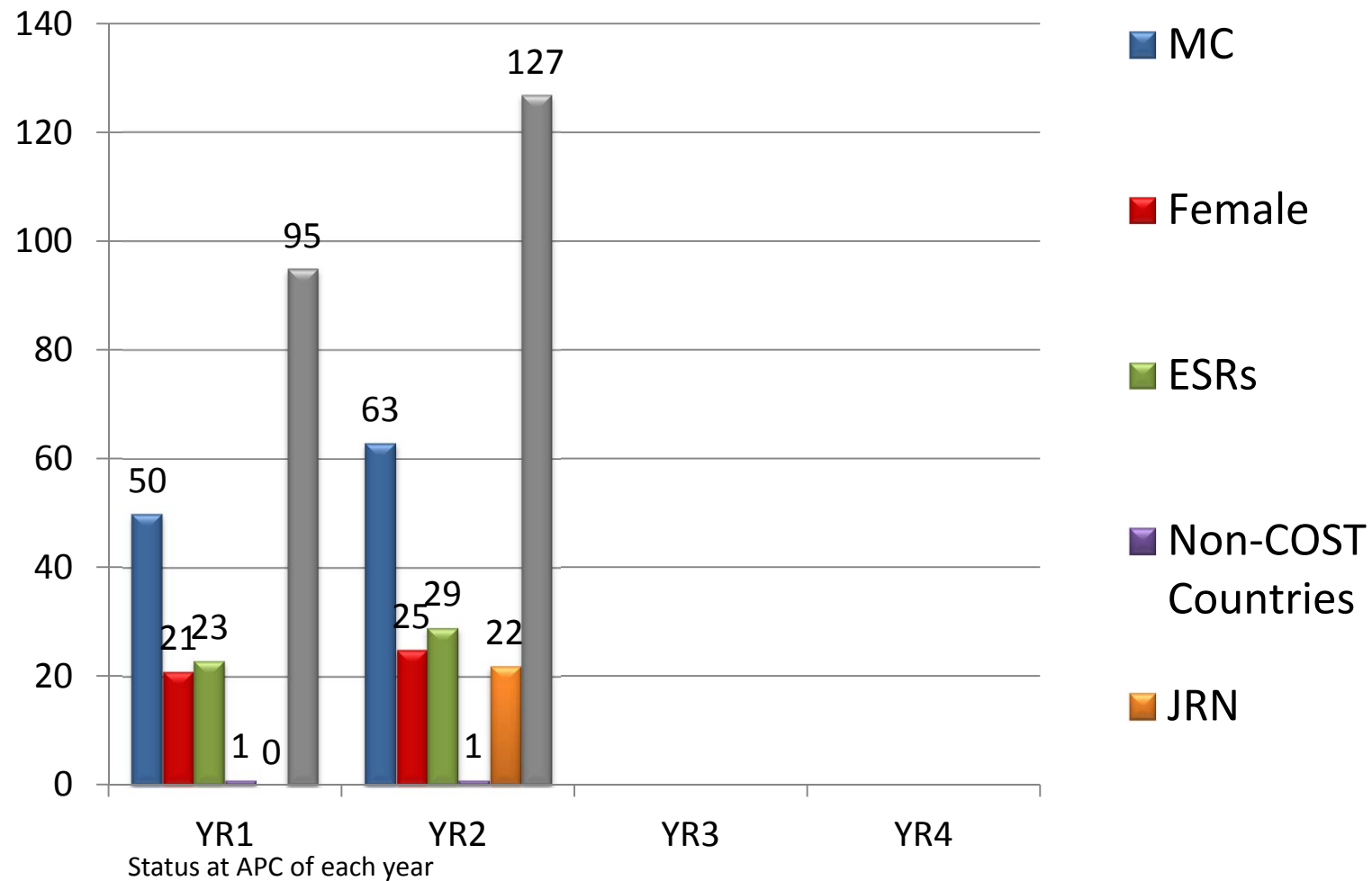
Turkey (new)

Norway

1st STS . July 2012 . Cecília Silva

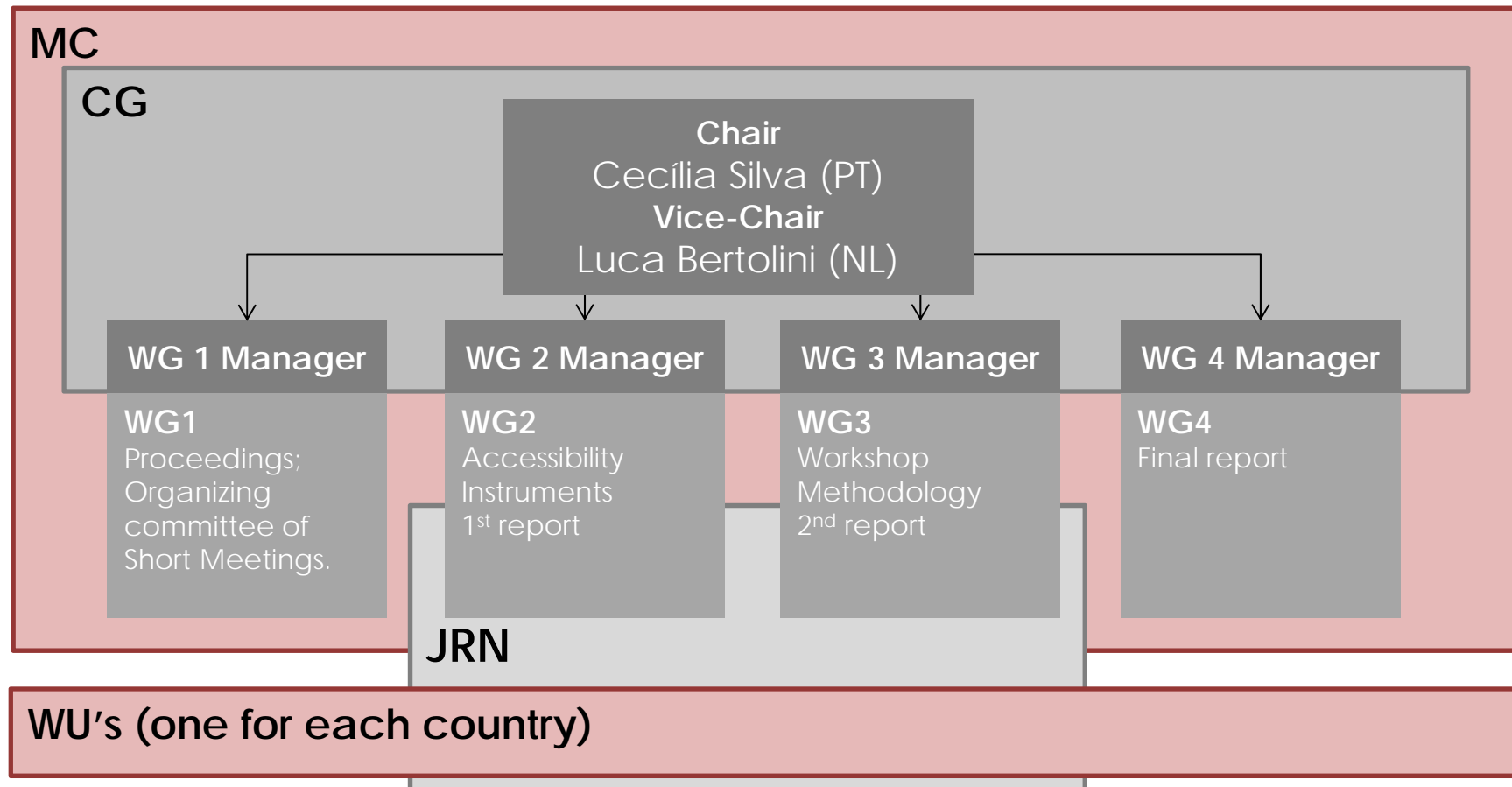
# Action Participants

Gestão da Mobilidade Urbana



# Coordination and Organisation

Gestão da Mobilidade Urbana



# WG2 – Accessibility Instruments

*Gestão da Mobilidade Urbana*



- **Produce template for accessibility instrument spreadsheets**
- **Discuss theoretical usability of accessibility instruments for planning practice**
- **Produce report 1 “Accessibility Instruments for Planning Practice”**
- **Co-produce report 2 “Workshop Evaluations of Accessibility Measures”:**
  - **presentation of local case study cities and of Pilot case study cities and their planning problems to be addressed during workshops**

# WG3 – Workshop Methodology

*Gestão da Mobilidade Urbana*



- **Literature review: state of knowledge and of practice of workshops for discussing usability of planning support systems with planning practitioners**
- **Develop the methodology for workshops (oversee implementation);**
- **Develop reporting spreadsheets for workshops**
- **Co-produce report 2 “Workshop Evaluations of Accessibility Measures”:**
  - **Presentation and discussion of Workshop methodology (based on literature review of WG3, on the results of the methodological discussion of the 2nd Short Meeting);**
  - **Presentation of results of all workshops (based on proceedings of the 3rd Short Meeting and of the result spreadsheets of the International Workshops)**

# WG4 - Findings

*Gestão da Mobilidade Urbana*



- **Bringing together results and findings of separate workshops;**
- **Providing answer to research question;**
- **Edit/produce final report and book; produce general findings, conclusions and recommendations.**



## *Gestão da Mobilidade Urbana*



- **Members:**
  - All partners of the Action;
  - each WU holds partners from the same country (more than one WU per country is possible)
- **Main function:**
  - present at least one accessibility instrument;
  - organize and execute local workshops with a number of selected accessibility instruments from the group of instruments proposed by all WU's;
  - produce papers for all Annual Meetings (in accordance with the task of each phase of the Action)

# JRN in TU1002

*Gestão da Mobilidade Urbana*



- **The JRN**

- **Group of ESR building up na independent group within the Action**

- Develop your own work program
    - Decide what you want to do with this
    - Contact Point: Nuno Pinto

- **Directly involved in the Action**

- Choose a WG to participate (WG2 or WG3) – participate in the next meetings
      - Amsterdam July 2012 (not this one)
      - Munich February 2013
      - Copenhagen Summer 2013
      - Mikolow Winter 2013/2014
      - Oporto May 2014
    - Choose an existing WU to participate
      - Participate in local workshops